

# PARCEL MAP COAL 07-0230

BEING A LOT LINE ADJUSTMENT BETWEEN LOTS A & B OF LOT 128, OF THE DUNNING AND DRESSER TRACT AS PER CERTIFICATES OF COMPLIANCE RECORDED AS DOCUMENT #2029-414 AND #2029-415, AND AS SHOWN ON A-MB-119 AND 30-LS-91, IN THE COUNTY OF SAN LUIS OBISPO, STATE OF CALIFORNIA.

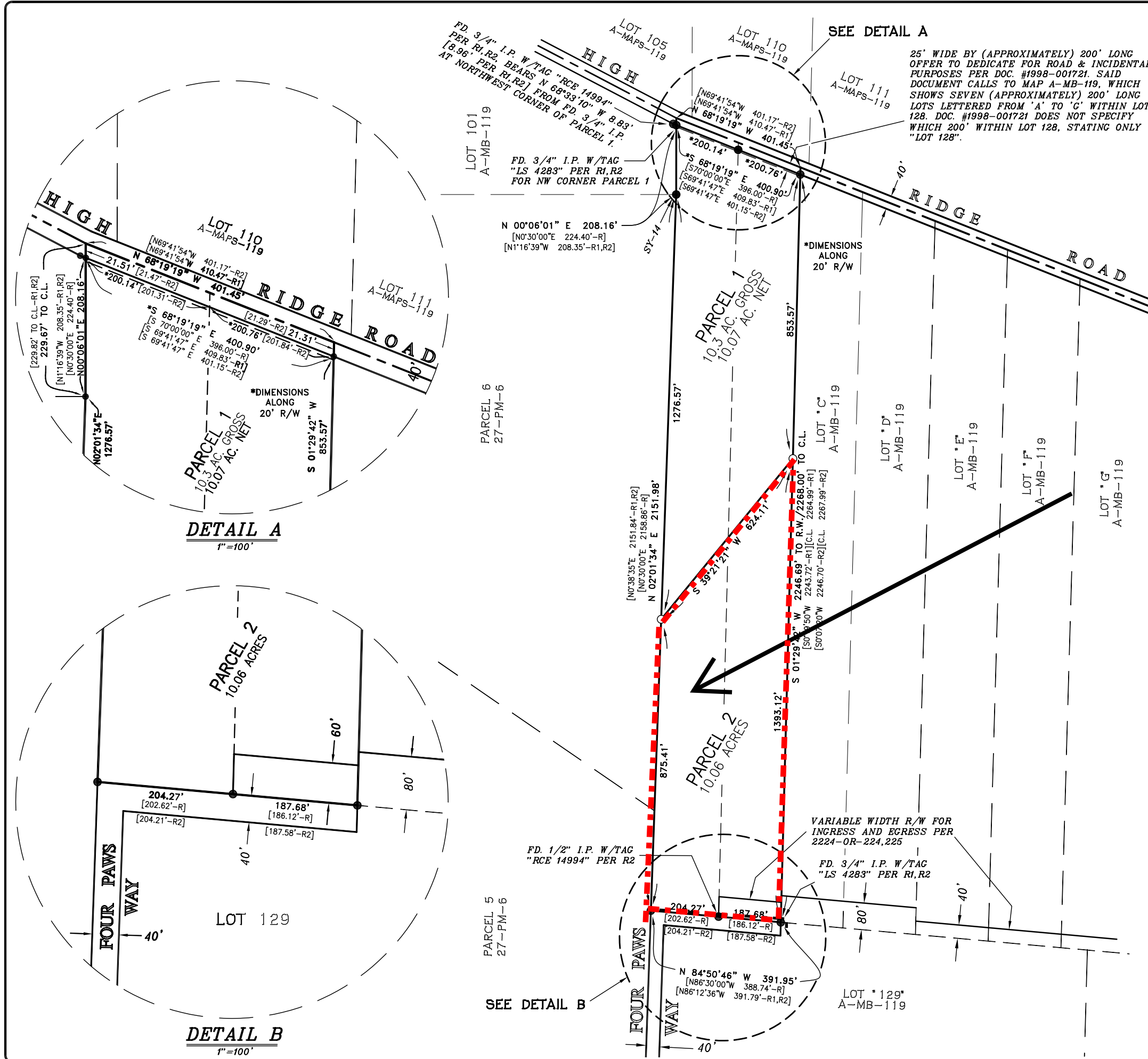
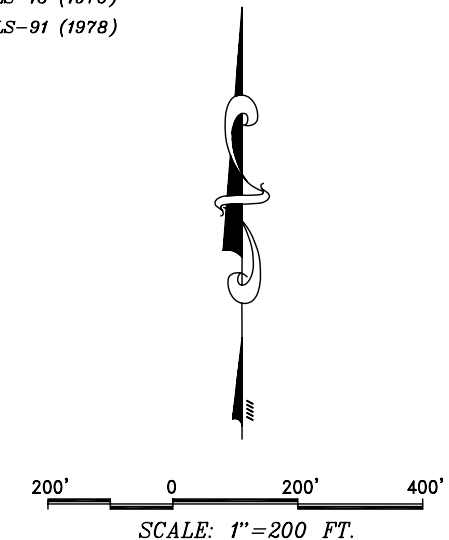
## BASIS OF BEARINGS

THE BEARINGS SHOWN HEREON, NOT ENCLOSED WITHIN BRACKETS [.....] ARE BASED ON THE CALIFORNIA COORDINATE SYSTEM: CCS83, ZONE 5. THE MEAN MAPPING ANGLE AT THE SITE IS  $-1^{\circ}28'47''$ .

NOTE: DISTANCES SHOWN HEREON, NOT ENCLOSED WITHIN BRACKETS [.....] ARE GRID DISTANCES OF THE CALIFORNIA COORDINATE SYSTEM: CCS83, ZONE 5. TO OBTAIN GROUND DISTANCES, MULTIPLY GRID DISTANCES BY THE COMBINED SCALE FACTOR: 1.000022001.

## LEGEND:

- = SET 1" I.P. W/BASS TAG "LS 4845", UNLESS OTHERWISE NOTED
- = FD. 3/4" IRON PIPE W/CAP "RCE 14994" PER R1 AND/OR R2 UNLESS OTHERWISE NOTED
- AC. = ACRES
- C.L. = CENTER LINE
- NW = NORTHWEST
- FD. = FOUND MONUMENT
- I.P. = IRON PIPE
- R/W = RIGHT OF WAY
- P.R. = POINT DETERMINED BY PRORATION ROTATION PER R1, R2
- R = A-MAPS-119 (1889)
- R1 = 26-LS-15 (1976)
- R2 = 30-LS-91 (1978)



25' WIDE BY (APPROXIMATELY) 200' LONG OFFER TO DEDICATE FOR ROAD & INCIDENTAL PURPOSES PER DOC. #1998-001721. SAID DOCUMENT CALLS TO MAP A-MB-119, WHICH SHOWS SEVEN (APPROXIMATELY) 200' LONG LOTS LETTERED FROM 'A' TO 'G' WITHIN LOT 128. DOC. #1998-001721 DOES NOT SPECIFY WHICH 200' WITHIN LOT 128, STATING ONLY "LOT 128".

**DETAIL A**  
1"=100'

**DETAIL B**  
1"=100'

SEE DETAIL B

SEE DETAIL A

**TWIN CITIES SURVEYING, INC.**

615-C S. MAIN STREET / P.O. BOX 777  
 TEMPLETON, CALIFORNIA 93465-0777  
 (805) 434-1834  
 SHEET 2 OF 2      JN 07137